

Advantech AE Technical Share Document

| | | | |
|------------------------|--|-------------------|--------------|
| Date | 2021/02/18 | SR# | 1-4469759933 |
| Category | <input type="checkbox"/> FAQ <input checked="" type="checkbox"/> SOP | Related OS | N/A |
| Abstract | How to open up NTP service in Linux OS | | |
| Keyword | ADAM-6700, NTP, time calibration | | |
| Related Product | ADAM-6700, ECU | | |

■ **Problem Description:**

This document will illustrate how to open up specific service, NTP in Linux system. Then any module with Linux OS could automatically calibrate system time.

■ **Solution- Step by Step:**

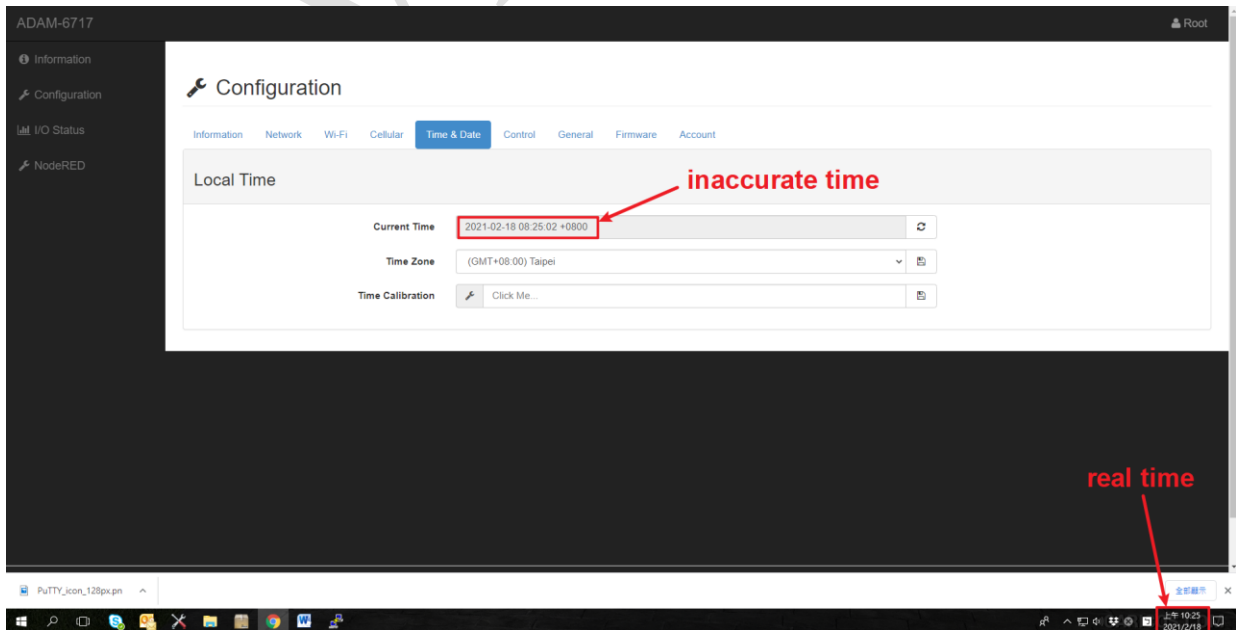
Here, I will use ADAM-6700 for example.

1. Access Linux system via SSH console, such as Putty below.



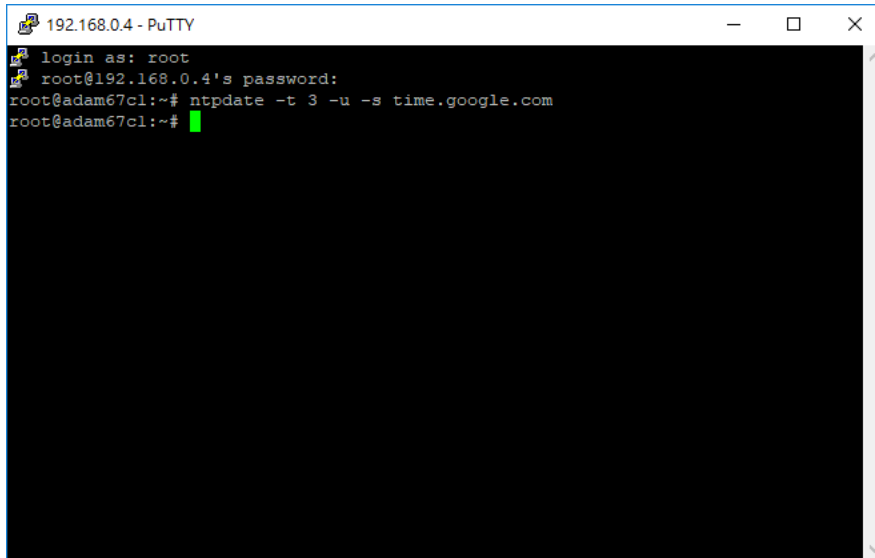
2. Check whether the time in Linux system is accurate.

The picture below manifest that the time in system actually has two hours delay.

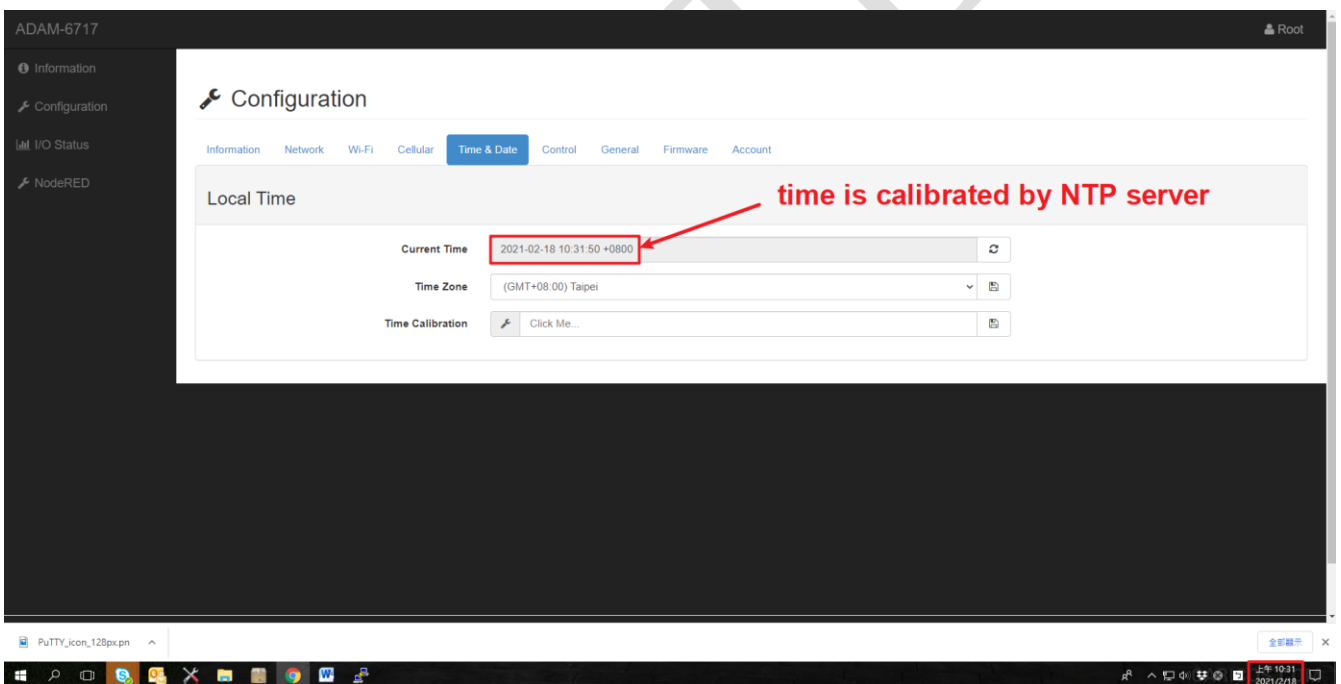


3. Give certain command in Putty.

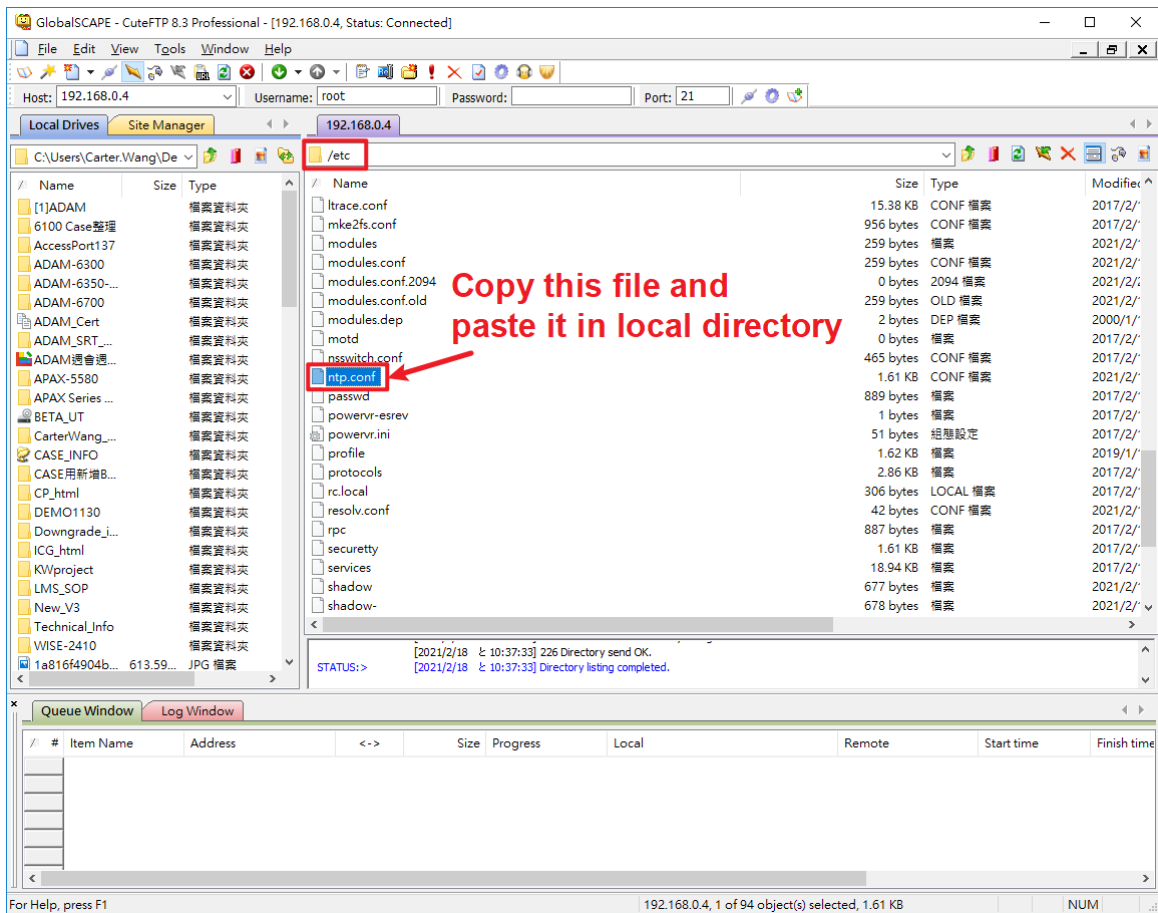
`ntpdate -t 3 -u -s time.google.com`



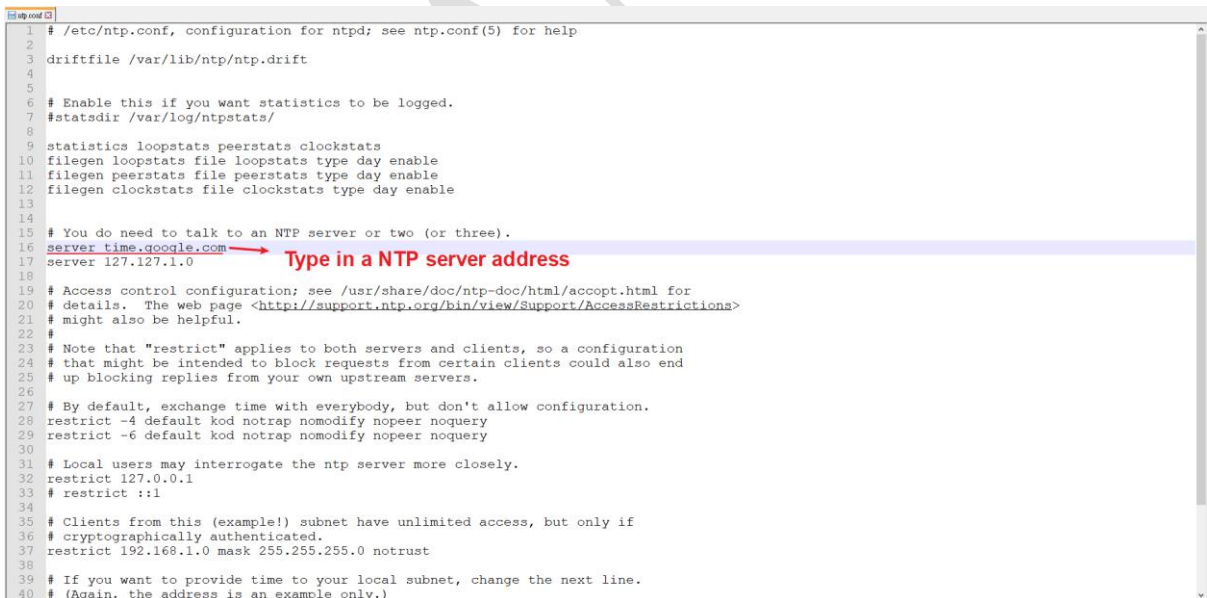
Then you could check from web Utility again to see whether the system time in ADAM-6700 has been calibrated.



4. Use FTP client to access the system folder to doctor up the certain file called `ntp.conf`.



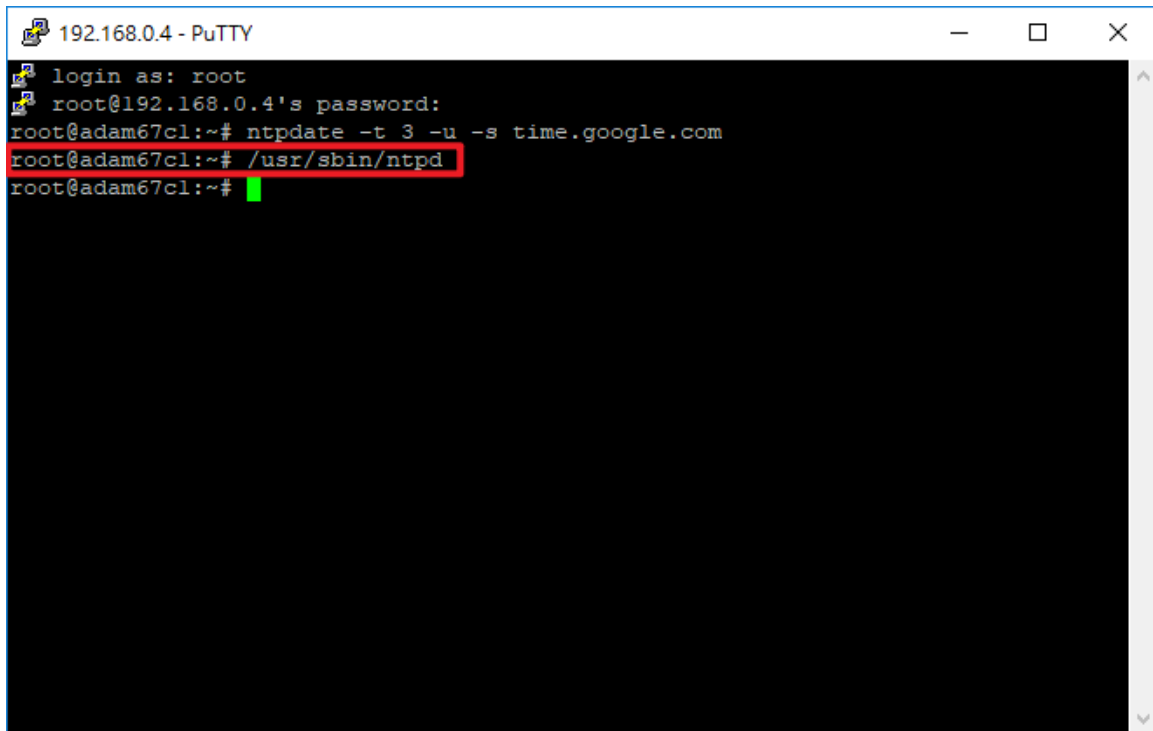
After placing the file mentioned in above picture in local directory, we open it up and modify it a little bit according to below picture.



After modifying the config file, users would have to **place it right back** to where it comes.

5. Utilize Putty to open up NTP service.

`/usr/sbin/ntpd`



```
192.168.0.4 - PuTTY
login as: root
root@192.168.0.4's password:
root@adam67c1:~# ntpdate -t 3 -u -s time.google.com
root@adam67c1:~# /usr/sbin/ntpd
root@adam67c1:~#
```

6. The NTP service is open successfully!